

Work Group  
KJ Method

Site Visit

- MHLW
- NCGM
- Tonomachi
- Setagaya Ward

# Big Data Platform

4 -17 March 2018  
JICA Tokyo, Japan

TEAMWORK

“Sakura”

“Fuji”

“Sushi”

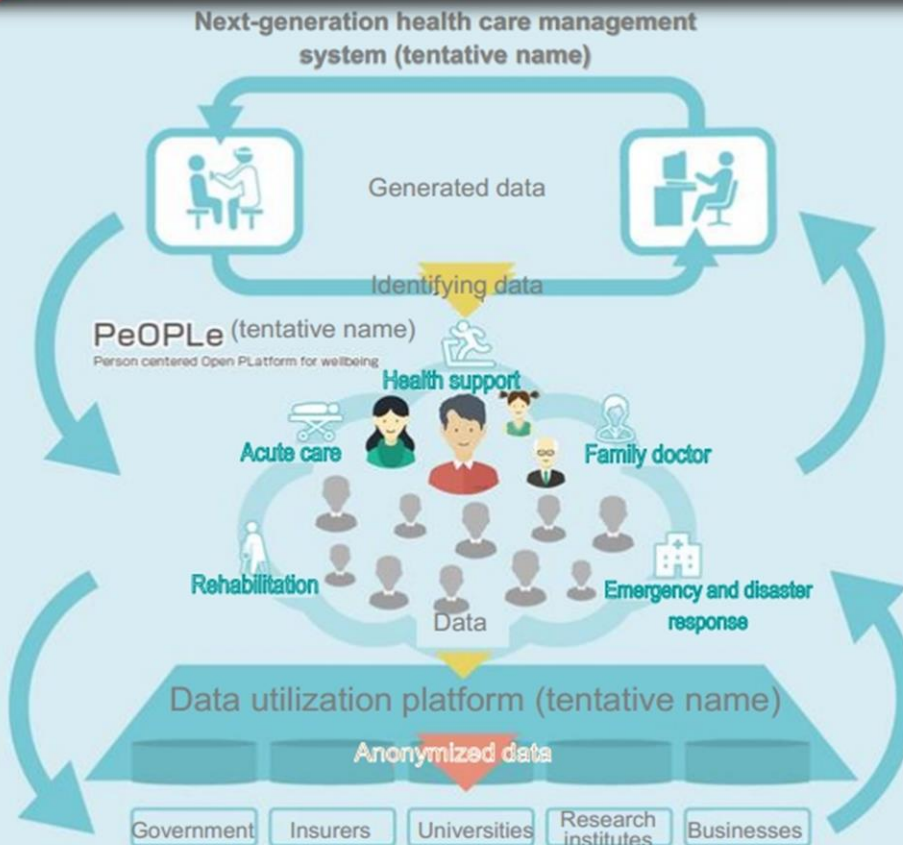
Lecturers

# Overview

- Lecturers
- Site Visit
- Work Group

# Lecturers

- Health Care 2035 & PeOPLE



## Layer 1: Creating

- ◆ Develop a **next-generation healthcare management system** (tentative name) to analyze the latest evidence and clinical data with big data using AI to support optimum medical treatments on site.

## Layer 2: Connecting

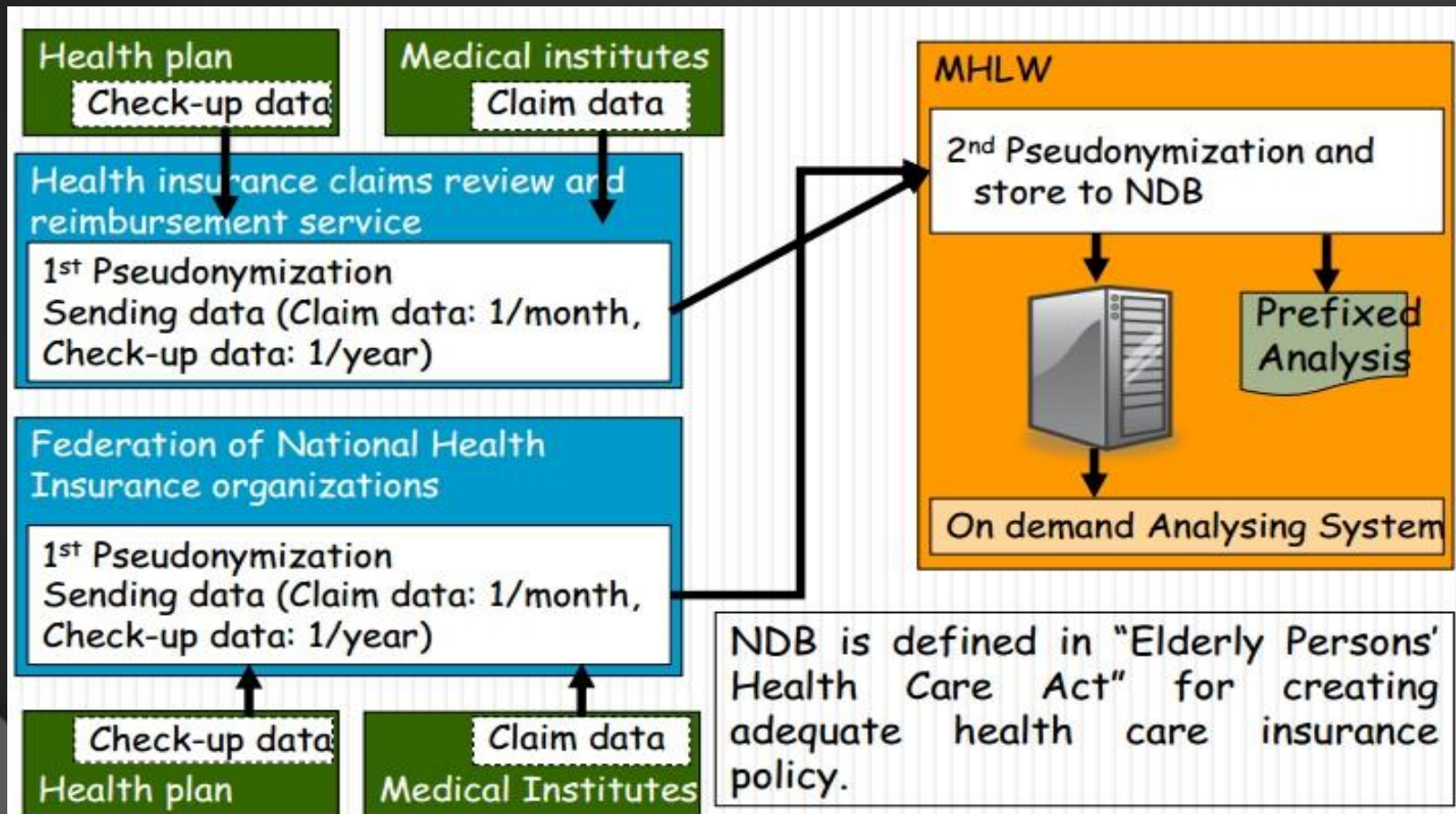
- ◆ Integrate basic health care data around the individual, from that individual's healthy stages to stages of disease and long-term care.
- ◆ Develop **PeOPLE** (tentative name), shared by health care professionals where all patients and the public can participate so that they as individuals can use it for their own health management.

## Layer 3: Expanding

- ◆ Various actors in industry, government, and academia have access to the data and utilize this medical and long-term care health care data in the form of big data.
- ◆ Development of a **data utilization platform** (tentative name) that can collect, process (anonymize, etc.), and provide health care data by objective according to various needs from industry, government, and academia from PeOPLE (tentative name) and databases by objective.

# Lecturers

- NDB (National Database)



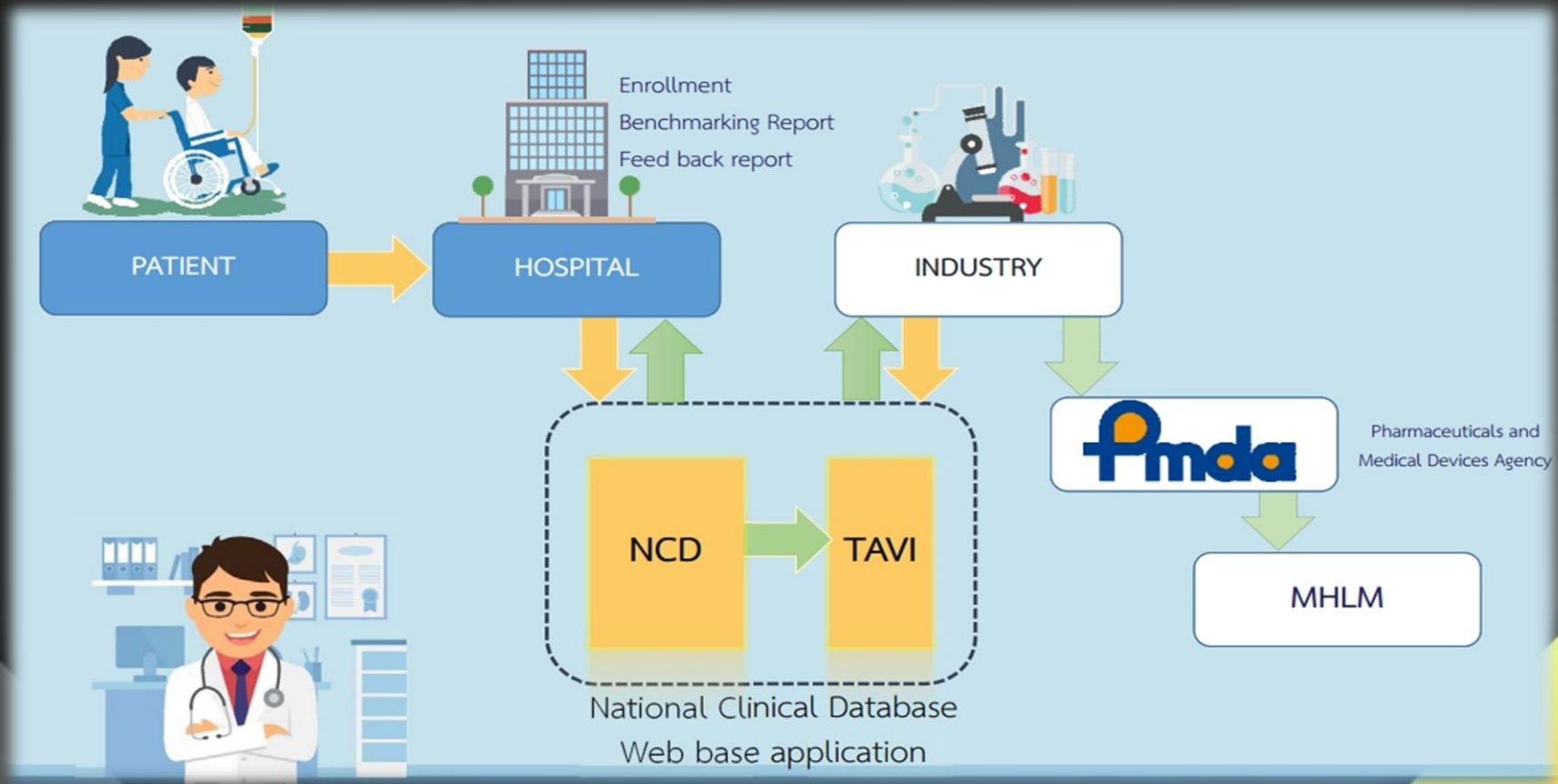
# Lecturers

## AI & Blockchain

- AI for Healthcare
  - Chatbot
  - AI ช่วยตัดสินใจจากภาพ X-ray และ MRI
- Blockchain for Healthcare
  - Medical Data Access
  - Permission Management

# Lecturers

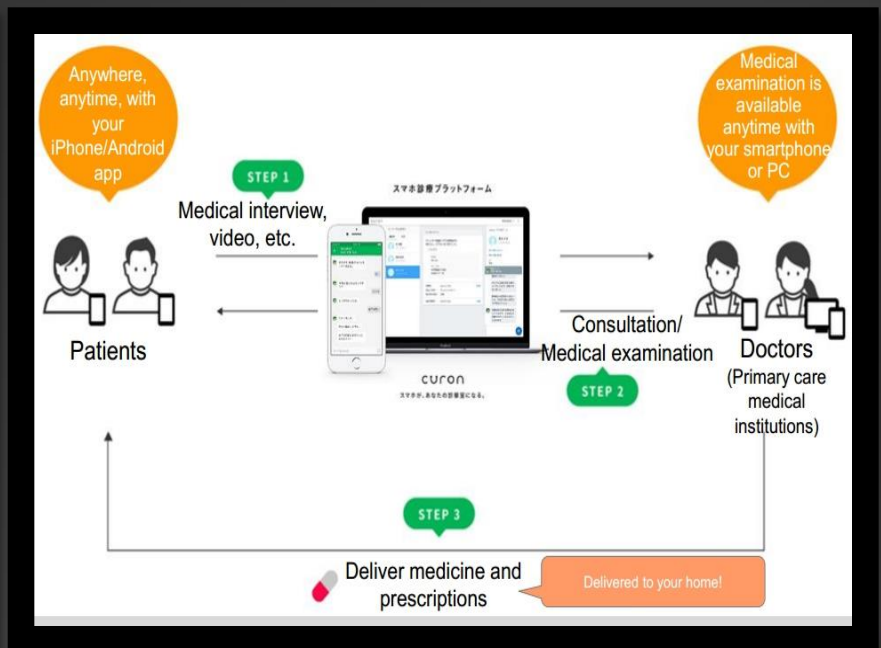
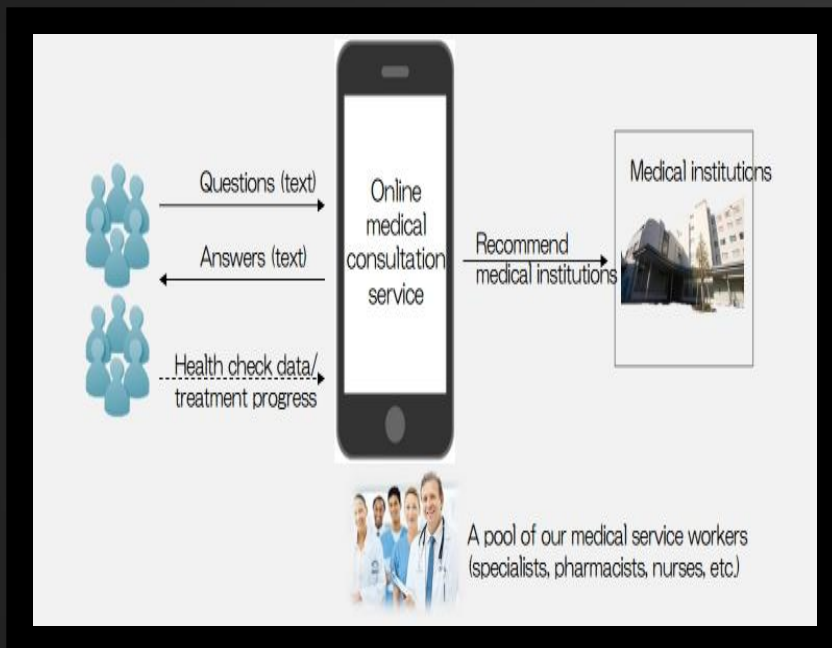
## NCD (National Clinic Database)



# Lecturers

## MICIN

## Medical Note



# Site Visit

- Nation center for global health and medicine





# Site Visit

- Tonomachi Research Complex (Cont.)



# Site Visit

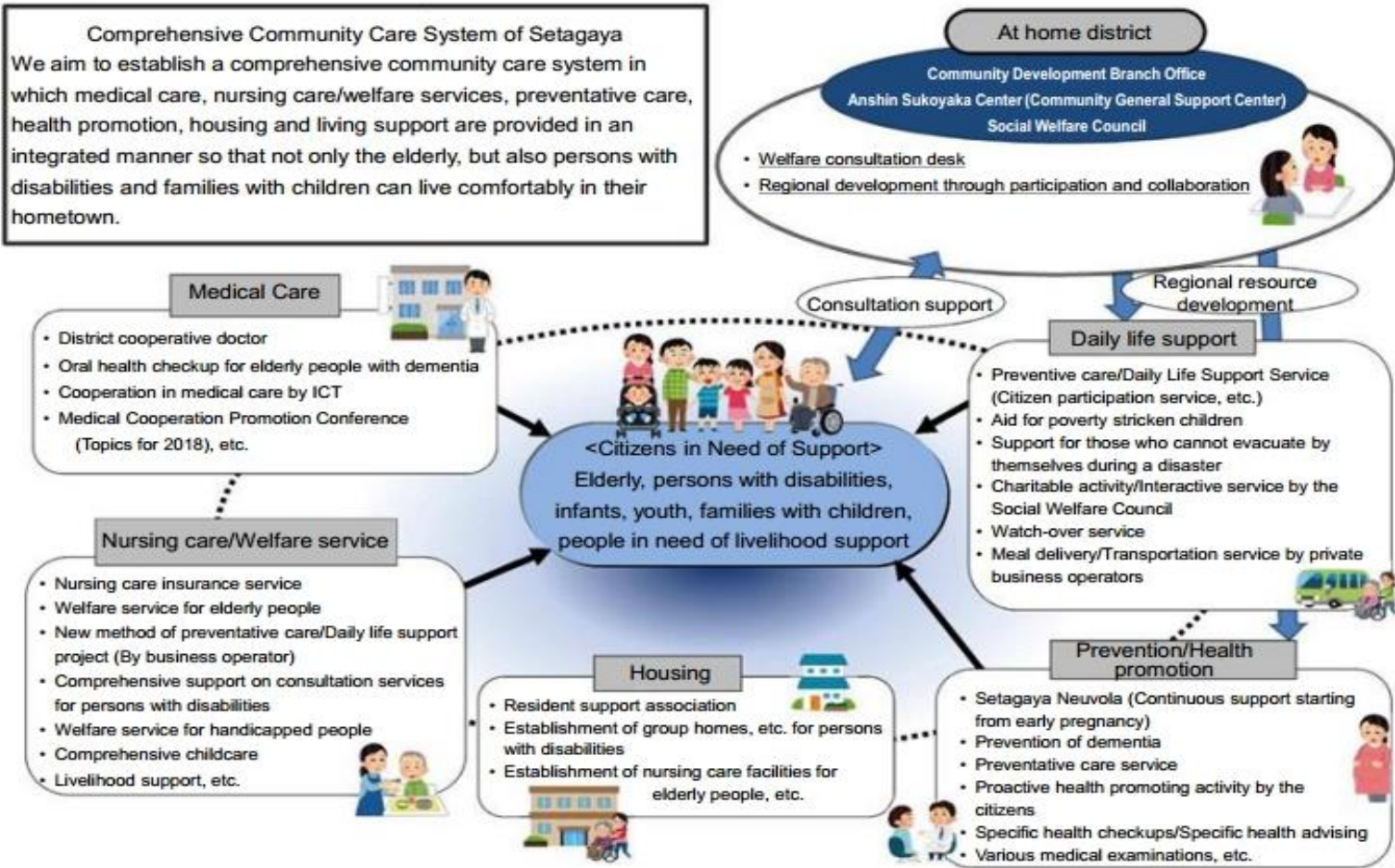
- Nursing Care Robot Promotion Center



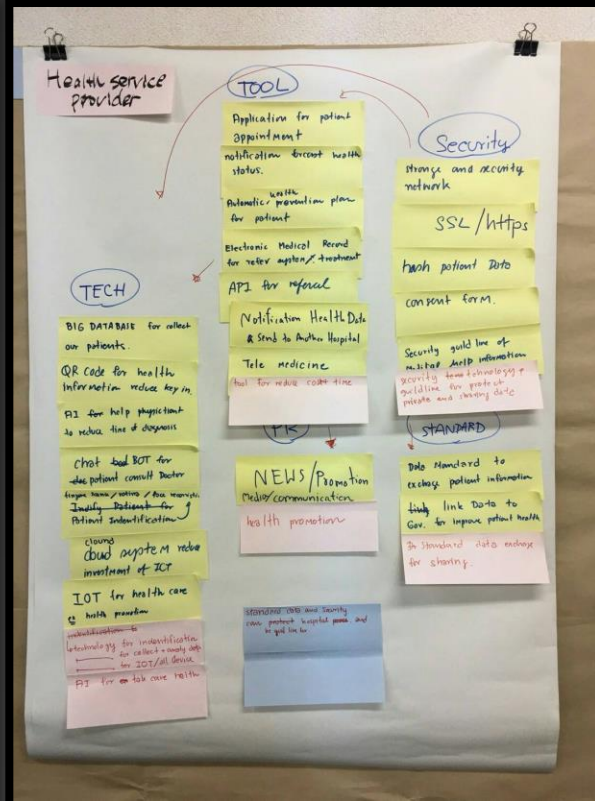
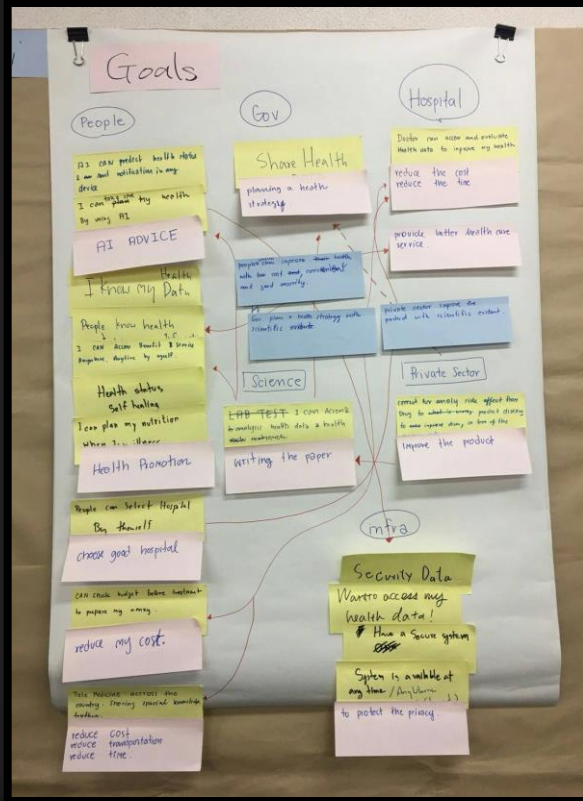
# Site Visit

## • Setagaya Ward

**Comprehensive Community Care System of Setagaya**  
 We aim to establish a comprehensive community care system in which medical care, nursing care/welfare services, preventative care, health promotion, housing and living support are provided in an integrated manner so that not only the elderly, but also persons with disabilities and families with children can live comfortably in their hometown.



# Work Group (KJ Method)





Thank you

あ り が と う

a ri ga to u